



## Markets and Economies

# June Fed Meeting: Policy Signals from the New Chairman

A summary of the latest FOMC policy decision, economic backdrop, leadership transition, and what it may mean for portfolios in the new Warsh era.



Leah Traub, Ph.D.,  
*Partner and Portfolio Manager*

### KEY TAKEAWAYS

- The U.S. Federal Reserve (Fed) held rates steady at its June meeting, but the statement leaned hawkish, with a continued focus on above-target inflation and price stability.
- Fed Chair Warsh signaled a shift toward less forward guidance, which may leave markets more dependent on incoming economic data.
- The updated dot plot moved more hawkish, with several participants projecting a rate hike in 2026, though later projections suggested potential cuts ahead.
- Warsh announced five task forces to review Fed communications, the inflation framework, the balance sheet, data and methodology, and productivity and jobs.
- Investment implications: Less forward guidance may increase uncertainty, volatility, and dispersion, while resilient fundamentals continue to support high-quality credit and carry opportunities. A multi-sector approach is well suited to this environment, providing the flexibility to capture relative value across credit sectors, diversify income sources, and manage downside risk as dispersion rises. Selectivity remains important.

The U.S. Federal Reserve's (Fed's) June Federal Open Market Committee (FOMC) meeting marked an important policy moment under new Fed Chair Kevin Warsh. As widely expected, the FOMC, the policy setting arm of the Fed, held the target range for the federal funds rate steady at 3.50% to 3.75% on June 17. While the rate decision came as no surprise to financial markets, the more notable developments were the tone of the policy statement, the updated economic projections, and Chair Warsh's initial signals about how he may lead the Fed.

### A Shorter Policy Statement and Minimal Forward Guidance

The June policy statement was much shorter and simpler than statements over the last eight years. It included the rate decision and a brief assessment of the economic and inflation outlook but removed much of the forward guidance markets had long become accustomed to.



In his post-meeting press conference, Chair Warsh indicated that the Committee had discussed forward guidance and concluded that it may no longer be helpful in the current environment. That suggests markets may need to rely more heavily on incoming data and less on explicit guidance from the Fed.

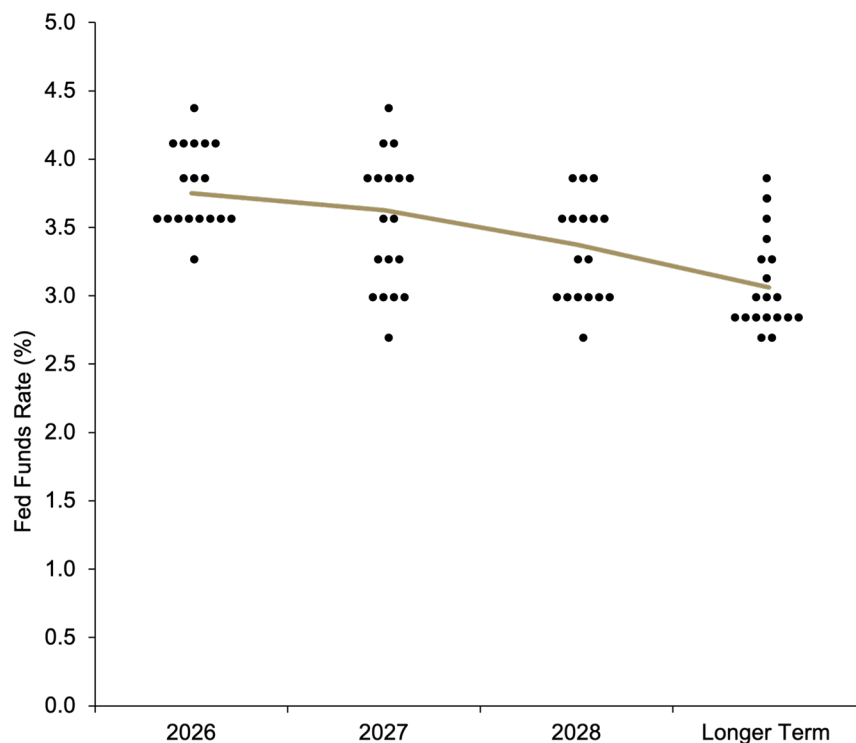
The statement also leaned hawkish, describing the U.S. economy as solid, acknowledging uncertainty, and remaining clear that inflation is still above the Fed's 2% target rate. The Committee also emphasized its commitment to restoring price stability.

## Assessing The Dot Plot

The updated Summary of Economic Projections (SEP) also drew market attention. Chair Warsh did not submit his own expectations about the fed funds rate, (a "dot" in the dot-plot survey of FOMC members), consistent with his previously expressed skepticism about the SEP and dot plot framework. However, the other 18 Committee participants did submit projections, and those dots shifted in a more hawkish direction. Several participants projected at least one rate hike by the end of 2026, while only one participant projected a rate cut. That moved the median dot higher compared with the March 2026 projections, when the median still implied a cut by year-end.

At the same time, the projections were more nuanced than the immediate market reaction suggested. While the 2026 dots showed the possibility of near-term tightening, the 2027 and 2028 projections suggested that some of that tightening could later be reversed. In other words, the Committee seemed to be acknowledging a potential near-term inflation challenge but not necessarily signaling the start of a sustained hiking cycle.

**Figure 1. Fed Dot Plot Suggests a Near-Term Hike Then a Reversal Ahead**



Source: U.S. Federal Reserve. Data as of June 17, 2026. The Fed's dot plot shows where each Fed official expects interest rates to be in the future. Each dot represents one official's projection. For illustrative purposes only and does not represent any specific portfolio managed by Lord Abbett or any particular investment.



## Inflation Remains the Most Important Issue

FOMC members' inflation projections also moved higher, as shown in Figure 2. The Fed now appears to expect inflation will remain elevated in the near term before moderating next year. If inflation pressure remains in areas such as energy, goods, or artificial intelligence (AI)-related investment demand, monetary policy has limited ability to directly address those pressures. However, if inflation pressures develop due to wages, housing costs, or core services, the Fed may have a stronger case for additional tightening. For now, the labor market appears resilient but not inflationary. Payroll growth has remained solid, unemployment remains low, and consumer activity has held up. That gives the Fed room to wait, but it also reduces the urgency to cut rates.

**Figure 2. A View of the Fed's Summary of Economic Projections**

| Median Projection         | 2026       | 2027       | 2028       | Longer Run |
|---------------------------|------------|------------|------------|------------|
| <b>Change in Real GDP</b> | <b>2.2</b> | <b>2.3</b> | <b>2.2</b> | <b>2.0</b> |
| <i>March Projection</i>   | <b>2.4</b> | <b>2.3</b> | <b>2.1</b> | <b>2.0</b> |
| <b>Unemployment Rate</b>  | <b>4.3</b> | <b>4.3</b> | <b>4.2</b> | <b>4.2</b> |
| <i>March Projection</i>   | <b>4.4</b> | <b>4.3</b> | <b>4.2</b> | <b>4.2</b> |
| <b>PCE Inflation</b>      | <b>3.6</b> | <b>2.3</b> | <b>2.0</b> | <b>2.0</b> |
| <i>March Projection</i>   | <b>2.7</b> | <b>2.2</b> | <b>2.0</b> | <b>2.0</b> |
| <b>Core PCE Inflation</b> | <b>3.3</b> | <b>2.5</b> | <b>2.1</b> | <b>-</b>   |
| <i>March Projection</i>   | <b>2.7</b> | <b>2.2</b> | <b>2.0</b> | <b>-</b>   |
| <b>Federal Funds Rate</b> | <b>3.8</b> | <b>3.6</b> | <b>3.4</b> | <b>3.1</b> |
| <i>March Projection</i>   | <b>3.4</b> | <b>3.1</b> | <b>3.1</b> | <b>3.1</b> |

Source: U.S. Federal Reserve. Data as of June 17, 2026. The Summary of Economic Projections (SEP) is a report published by the Federal Reserve that provides FOMC participants' forecasts for key economic variables over the next several years and the longer run. For illustrative purposes only and does not represent any specific portfolio managed by Lord Abbett or any particular investment.

## Five New Task Forces to Study Policy Framework

One of the most important announcements from Chair Warsh was the creation of five task forces, each designed to review key parts of the Fed's policy framework and operating approach. Importantly, Warsh was clear that the Fed's 2.0% inflation target is not up for debate. The five task forces are:

**Fed Communications:** This group is expected to review how the Fed communicates policy decisions, economic assessments, and the outlook for rates. Any changes here could have meaningful implications for market expectations and rate volatility.

**Inflation Framework:** This task force will examine how the Fed thinks about inflation dynamics and the tools available to return inflation to the 2% target. The Fed may reassess how it evaluates inflation shocks and the path back to price stability.

**Balance Sheet:** This group will focus on the Fed's balance sheet and its role in monetary policy. Its work could affect liquidity conditions, reserve management, and the broader transmission of policy through financial markets.

**Data and Methodology:** This task force will review the data sources and analytical methods the Fed uses to assess the economy. That could be relevant in an environment where inflation, productivity, labor markets, and technology are changing quickly.



**Productivity and Jobs:** This group will examine labor-market dynamics and productivity trends, including the potential effects of AI and other structural changes.

These developments suggest strongly that Chair Warsh may be preparing for a broader review of how the Fed operates, communicates, and evaluates the economy. That process may take time, but it could be important for investors if it leads to less forward guidance or a different approach to policy signaling.

## Rate Volatility May Shift Higher

One important market implication of the June meeting was the potential for higher rate volatility, particularly at the front end of the Treasury yield curve. If the Fed provides less forward guidance under Chair Warsh, markets may become more sensitive to incoming data and policy surprises. That could lead to larger moves in shorter-maturity yields as investors reassess the timing and probability of future rate hikes. At the same time, longer-maturity yields may remain more contained. If markets believe that any near-term tightening could eventually weigh on growth, the back end of the curve may continue to find support.

The immediate market reaction following the meeting was hawkish. The two-year U.S. Treasury Bond yield moved sharply higher; the U.S. dollar strengthened; and equities came under some pressure. The market also began pricing a higher probability of rate hikes over the coming months. We believe that reaction may have gone somewhat beyond what the Fed actually signaled. The Committee has clearly moved in a more hawkish direction, but it remains divided. The data over the next several weeks will be important in determining whether the Fed ultimately needs to tighten further or can remain on hold.

## Investment Implications and Portfolio Positioning

We believe the broader economic backdrop remains supportive for fixed income, particularly credit and a multi-sector approach, but selectivity is critical. The economy continues to look resilient, supported by solid earnings growth, a durable labor market, and a consumer that remains in relatively good shape. That combination may continue to support spread sectors and carry-oriented opportunities.

At the same time, valuations remain tight, so this does not appear to be an environment for indiscriminate risk-taking. We believe the opportunity is to lean into high-quality carry, while remaining disciplined on issuer and security selection. That means looking carefully across companies and industries to identify those that may benefit from the current environment, including structural themes such as AI, while avoiding those that may be more vulnerable.

On the rates side, the shift in Fed communication could be important. If Chair Warsh's Fed provides less forward guidance, front-end rate volatility may remain elevated as markets respond more directly to inflation data, labor-market trends, and policy signals. Longer-term yields may remain more range-bound, particularly if investors believe any near-term tightening would eventually weigh on growth. Overall, we believe portfolios should remain constructive but disciplined, keeping risk on where fundamentals support it and emphasizing quality and security selection.



## Glossary & Index Definitions

A **basis point** is one one-hundredth of a percentage point.

**Carry** is the difference between the yield on a longer-maturity bond and the cost of borrowing.

**The dot plot** is a chart that shows each Fed official's forecast for future interest rates, offering insight into where policy may be headed.

**Duration** is a measure of the sensitivity of the price (the value of principal) of a fixed-income investment to a change in interest rates. Cost of capital is the minimum rate of return a company must earn on its investments to satisfy its providers of capital (both debt and equity investors).

**The Federal Reserve (Fed)** is the central bank of the United States. The Federal Open Market Committee (FOMC) is the branch of the Fed that determines the direction of monetary policy in the United States.

**The federal funds rate** is the interest rate at which depository institutions lend reserve balances to other depository institutions overnight on an uncollateralized basis. Fed funds futures are financial futures contracts based on the federal funds rate and traded on the Chicago Mercantile Exchange. These futures are considered a direct reflection of collective marketplace insight regarding the future course of the Federal Reserve's monetary policy.

A **hawkish** stance means the Federal Reserve is focused on controlling inflation, typically by raising interest rates or keeping policy tight for longer. Dovish Fed policy stance means the Fed is focused on supporting economic growth and employment, typically by lowering interest rates or maintaining accommodative policy.

**Spread** is the percentage difference in current yields of various classes of fixed-income securities versus Treasury bonds or another benchmark bond measure. A bond spread is often expressed as a difference in percentage points or basis points (Each basis point equals one one-hundredth of a percentage point). The option-adjusted spread (OAS) is the measurement of the spread of a fixed-income security rate and the risk-free rate of return, which is adjusted to take into account an embedded option. Typically, an analyst uses the Treasury securities yield for the risk-free rate.

**Summary of Economic Projections (SEP)** is a Federal Reserve report that shows what policymakers expect for the economy and interest rates over the next several years.

**The U.S. Consumer Price Index (CPI)** is a measure that examines the weighted average of prices of a basket of consumer goods and services, such as transportation, food, and medical care. It is calculated by taking price changes for each item in the predetermined basket of goods and averaging them.

**Yield** is the income returned on an investment, such as the interest received from holding a security. The yield is usually expressed as an annual percentage rate based on the investment's cost, current market value, or face value. Yield-to-maturity (YTM) represents the expected return (expressed as an annualized rate) from the bond's future cash flows, including coupon payments over the life of the bond and the bond's principal value received at maturity. Yield-to-worst refers to the lesser of a bond's (a) yield-to-maturity or (b) the lowest yield-to-call calculated on each scheduled call date.

**Yield curve** is a line that plots the interest rates, at a set point in time, of bonds having equal credit quality, but differing maturity dates. One such comparison involves the two-year and 10-year U.S. Treasury debt. This yield curve is used as a benchmark for other debt in the market, such as mortgage rates or bank lending rates. The curve is also used to predict changes in economic output and growth.

## Important Information

The information contained herein is provided by Lord, Abbett & Co. LLC ("Lord Abbett"). Lord Abbett is a registered investment adviser under the U.S. Investment Advisers Act of 1940 (the "Advisers Act"), as amended, and is subject to the Advisers Act rules and regulations adopted by the U.S. Securities and Exchange Commission ("SEC"). Registration with the SEC does not imply a particular ability or training. Lord Abbett is a global asset manager with headquarters in Jersey City, New Jersey.

Certain information provided in the material has been obtained from third party sources and such information has not been independently verified by Lord Abbett. No representation, warranty, or undertaking, expressed or implied, is given to the accuracy or completeness of such information by Lord Abbett or any other person. While such sources are believed to be reliable, Lord Abbett does not assume any responsibility for the accuracy or completeness of such information. Lord Abbett does not undertake any obligation to update the information contained herein as of any future date.

Certain information contained in the material constitutes "forward-looking statements," which can be identified by the use of forward-looking terminology such as "may," "will," "should," "expect," "anticipate," "project," "estimate," "intend," "continue," or "believe," or the negatives thereof or other variations thereon or comparable terminology. Due to various risks and uncertainties, actual events, results or actual performance may differ materially from those reflected or contemplated in such forward-looking statements. Nothing contained in the material may be relied upon as a guarantee, promise, assurance or a representation as to the future.

Market forecasts and projections are based on current market conditions and are subject to change without notice. Projections should not be considered a guarantee.

### **Past performance is not a reliable indicator or guarantee of future results. All investments involve risk, including the loss of capital.**

The views and opinions expressed are those of the Lord Abbett author as of the date of the material, and do not necessarily represent the views of the firm as a whole. Any such views are subject to change at any time based upon market or other conditions and Lord Abbett disclaims any responsibility to update such views. References to specific asset classes and financial markets are for illustrative purposes only. This material is not intended to be relied upon as a forecast, research or investment advice. Neither Lord Abbett nor the Lord Abbett author can be responsible for any direct or incidental loss incurred by applying any of the information offered.

The information in this material does not constitute a distribution, an offer, an invitation, a personal or general recommendation or solicitation in any jurisdiction. This material has not been reviewed or approved by any regulatory authority in any jurisdiction.

None of the information provided should be regarded as a suggestion to engage in or refrain from any investment-related course of action as neither Lord Abbett nor its affiliates are undertaking to provide impartial investment advice, act as an impartial adviser, or give advice in a fiduciary capacity.

Mentions of specific companies are for reference purposes only and are not meant to describe the investment merits of, or potential or actual portfolio changes related to, securities of those companies.

Unless otherwise noted, all discussions are based on U.S. markets and U.S. monetary and fiscal policies.



This material may not be reproduced in whole or in part or any form without the permission of Lord Abbett.

**Important Information for non-U.S. Investors**

**Note to Switzerland Investors:** In Switzerland, the Representative is ACOLIN Fund Services AG, Leutschenbachstrasse 50, CH-8050 Zurich, whilst the Paying Agent is Bank Vontobel Ltd., Gotthardstrasse 43, CH-8022 Zurich. The prospectus, the key information documents or the key investor information documents, the instrument of incorporation, as well as the annual and semi-annual reports may be obtained free of charge from the representative. In respect of the units offered in Switzerland, the place of performance is at the registered office of the representative. The place of jurisdiction shall be at the registered office of the representative or at the registered office or domicile of the investor.

**Note to European Investors:** This communication is issued in the United Kingdom and distributed throughout the European Union by Lord Abbett (Ireland) Limited, UK Branch and throughout the United Kingdom by Lord Abbett (UK) Ltd. Both Lord Abbett (Ireland) Limited, UK Branch and Lord Abbett (UK) Ltd are authorized and regulated by the Financial Conduct Authority.

A decision may be taken at any time to terminate the arrangements made for the marketing of the Fund in any EEA Member State in which it is currently marketed. In such circumstances, Shareholders in the affected EEA Member State will be notified

of this decision and will be provided with the opportunity to redeem their shareholding in the Fund free of any charges or deductions for at least 30 working days from the date of such notification.

**Lord Abbett (Middle East) Limited** is authorised and regulated by the Dubai Financial Services Authority (“DFSA”). The entire content of this document is subject to copyright with all rights reserved. This research and the information contained herein may not be reproduced, distributed or transmitted in any jurisdiction or to any other person or incorporated in any way into another document or other material without our prior written consent. This document is directed at Professional Clients and not Retail Clients. Any other persons in receipt of this document must not rely upon or otherwise act upon it. This document is provided for informational purposes only. Nothing in this document should be construed as a solicitation or offer, or recommendation, to acquire or dispose of any investment or to engage in any other transaction. Nothing contained in this document constitutes an investment, an offer to invest, legal, tax or other advice or guidance and should be disregarded when considering or making investment decisions.

**Note to Singapore Investors:** Lord Abbett Global Funds I plc (the “Company”) and the offer of shares of each sub-fund of the Company do not relate to a collective investment scheme which is authorized under Section 286 of the Securities and Futures Act, Ch. 289 of Singapore (“SFA”) or recognized under Section 287 of the SFA, and shares in each sub-fund of the Company are not allowed to be offered to the retail public. Pursuant to Section 305 of the SFA, read in conjunction with Regulation 32 of and the Sixth Schedule to the Securities and Futures (Offers of Investments) (Collective Investment Schemes) Regulations 2005 (the “Regulations”), the Lord Abbett Global Multi-Sector Bond Fund, the Lord Abbett High Yield Fund, the Lord Abbett Short Duration Income Fund, the Lord Abbett Ultra Short Bond Fund, the Lord Abbett Climate Focused Bond Fund, the Lord Abbett Emerging Markets Corporate Debt Fund and the Lord Abbett Multi Sector Income Fund have been entered into the list of restricted schemes maintained by the Monetary Authority of Singapore for the purposes of the offer of shares in such sub-funds made or intended to be made to relevant persons (as defined in section 305(5) of the SFA), or, the offer of shares in such sub-funds made or intended to be made in accordance with the conditions of section 305(2) of the SFA. These materials do not constitute an offer or solicitation by anyone in Singapore or any jurisdiction in which such an offer or solicitation is not authorized or to any person to whom it is unlawful to make such an offer or solicitation.

**Note to Hong Kong Investors:** The contents of this material have not been reviewed nor endorsed by any regulatory authority in Hong Kong. An investment in the Fund may not be suitable for everyone. If you are in any doubt about the contents of this material, you should consult your stockbroker, bank manager, solicitor, accountant or other financial adviser for independent professional advice. The Fund is not authorised by the Securities and Futures Commission (“SFC”) in Hong Kong pursuant to Section 104 of the Securities and Futures Ordinance (Cap 571, Laws of Hong Kong) (“SFO”). This material has not been approved by the SFC in Hong Kong, nor has a copy of it been registered with the Registrar of Companies in Hong Kong and, must not, therefore, be issued, or possessed for the purpose of issue, to persons in Hong Kong other than (1) professional investors within the meaning of the SFO (including professional investors as defined by the Securities and Futures (Professional Investors) Rules); or (2) in circumstances which do not constitute an offer to the public for the purposes of the Companies (Winding Up and Miscellaneous Provisions) Ordinance (Cap 32, Laws of Hong Kong) or the SFO. This material is distributed on a confidential basis and may not be reproduced in any form or transmitted to any person other than the person to whom it is addressed.

Copyright © 2026 by Lord, Abbett & Co. LLC. All rights reserved.